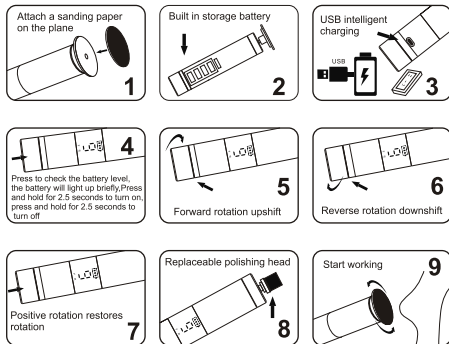


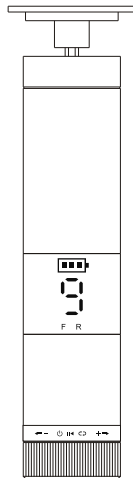
Operative function:



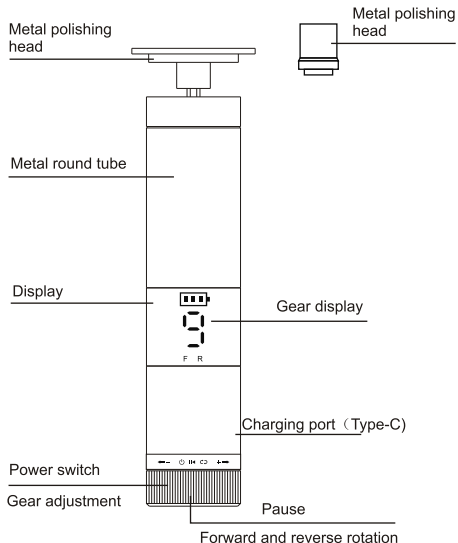
Attentions

- 1 .The grinding chip diameter cannot exceed 43mm .
- 2 . Do not attempt to repair the appliance . For after-sales service , Please contact agents or authorized repair center directly. You will enjoy the fast , high quality and satisfied service .
- 3 . If the power cord is damaged , it must be replaced by the maintenance department of manufacturer.
- 4 . Since the reduction gear group is adopted in this product , there will be a little mechanical running sound during the initial operation due to the grinding of the gears .

Electric Foot Callus Remover



Instruction Brochure



Product parameters:

Name: Electric foot callus remover

Model: HX-21

Working Modes: 9rd Gear

Rated Voltage: 5V

Working power: 1.5W

Battery Capacity: 1200mAh

Product Size: 153xØ33mm

Box Size: 209x118x44mm

Thank you for purchasing the precision Electric Foot Callus Remover from our company. In order to ensure your safety and the best performance for the appliance, please read this manual and keep it carefully before use.

Important safe guards :

1. Read these instructions.
2. Compliance with these instructions.
3. Pay attention to all warning messages.
4. Follow all instructions.
5. Do not operate in wet or moist conditions.
6. Only a dry cloth is allowed for cleaning.
7. This product requires DC 5V power supply.
8. Choose the appropriate grinding chip according to the operation. Remove the centrifugal paper from grinding chip and paste on the grinding wheel correctly.

Attentions

- 1 .The grinding chip diameter cannot exceed 43mm .
- 2 . Do not attempt to repair the appliance . For after-sales service , Please contct agents or authorized repair center directly. You will enjoy the fast , high quality and satisfied service .
- 3 . If the power cord is damaged , it must be replaced by the mainte- nance department of manufacturer.
- 4 .Since the reduction gear group is adopted in this product ,there will be a little mechanical running sound during the initial operation due to the grinding of the gears .

The damages need to repair

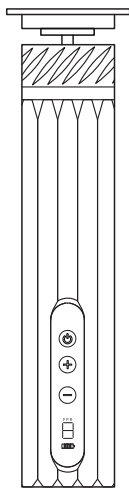
All maintenance work of below conditions must be carried out by professional maintenance personnel .

- 1 Replace the power cord when it is damaged .
- 2 There is object or liquid in the handle .
- 3 The power supply is normal , but the motor is not turning .
- 4 There is abnormal noise from bearing in the handle .

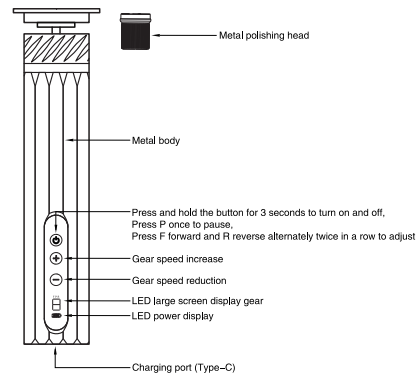
Based on the guidelines of continuous improving products and services ,our company reserve the right to change the design and specification without prior notice .

The product has the patent for this model and appearance design .Any counterfeit is an infringement of copyright .

Electric Foot Callus Remover



Instruction Manual



Product parameters:

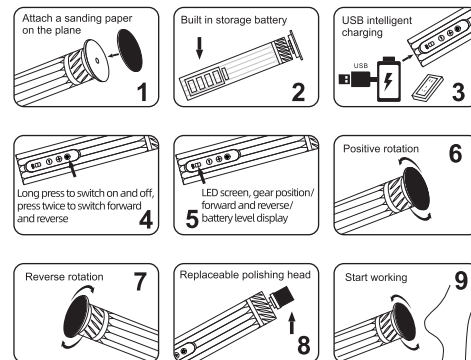
Product name: Electric foot grinding instrument
Product model: GMC-255
Working mode: 9-speed adjustment
Rated voltage: 12V
Work efficiency: 2W
Battery capacity: 2000mAh
Product size: 163x Ø30mm
Packaging size: 177.5x107.5x35mm

Thank you for purchasing the precision Electric Foot Callus Remover from our company. In order to ensure your safety and the best performance for the appliance . please read this manual and keep it carefully before use .

Important safe guards :

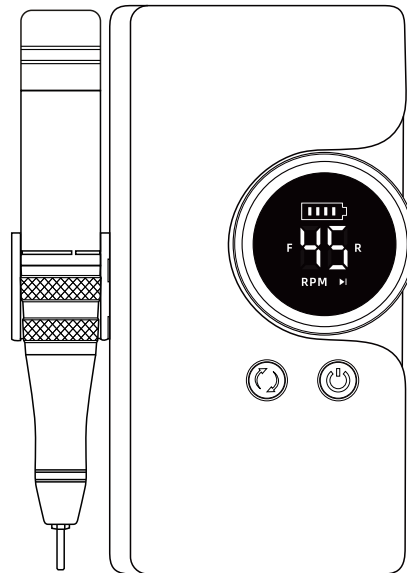
- 1 . Read these instructions .
- 2 .Compliance with these instructions .
- 3 . pay attention to all warning messages .
- 4 .Follow all instructions .
- 5 .Do not operate in wet or moist conditions .
- 6 .Only a dry cloth is allowed for cleaning .
- 7 .This product requires DC 5V power supply.
- 8 .Choose the appropriate grinding chip according to the operation . Re- move the centrifugal paper from grinding chip and paste on the grinding wheel correctly.

Operative function:

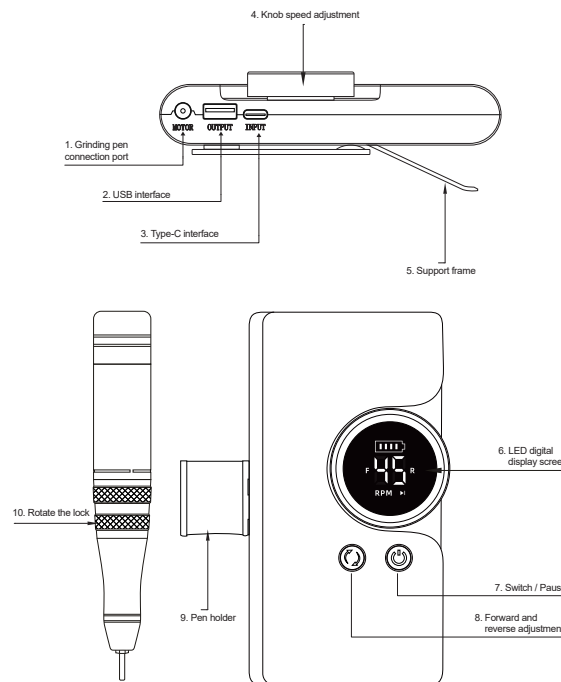


Portable nail polisher

Product Manual



Product drawing



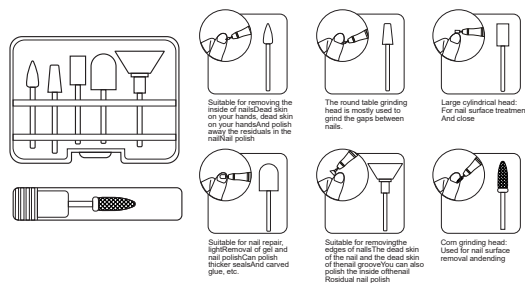
Product parameter

Input voltage	Battery voltage	Speed	
DC5V-2A	7.4V	MAX45000.RPM	
Host size	Length	Width	Height
	140mm	70mm	35mm
Grinding pen size	L		Ø
	125mm		24.5mm

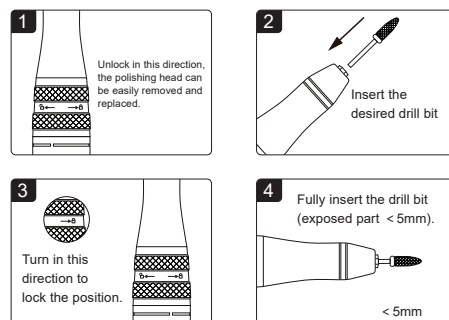
Instructions

- Power on:** Press and hold for 3 seconds to turn on and off the device. Press the "F" button once to turn it forward, and press it again. Press the "R" button to return to reverse.
- Connect the polishing pen to the host's connection port.
- Type-C polishing machine charging port.
- USB charging port, which can provide mobile phone charging function and can be used together with the polishing machine.
- Connect the connection port of the polishing pen to the host.
- Speed display: 00-45RPM, representing 0-45000RPM adjustment number. Battery level display: Equipped with a 2400mAh high-capacity battery charging structure. The full time is 4.5 hours.
- Knob:** Press the knob "P" once to pause. Rotate the clockwise needle button to increase the speed; Turn the counterclockwise button to slow down the speed.
- Pen holder:** Place the polishing pen.
- Loosen the polishing pen and turn the head, then place the polishing head at the bottom and clamp it tightly.

Introduction to grinding head



Operation diagram



Note: when turning the switch lock left and right, be sure to insert a grinding head or thimble. Otherwise, it will cause too tight rotation, which is also a normal phenomenon.

Packing list

- Host*1
- Polishing pen*1
- Connecting cable*1
- Instruction manual*1
- Polishing head*6
- Type-c charging cable*1

Precautions !

- Precautions for grinding operation:
- Please clean the grinding head before use.
 - Before replacing the grinding head, please cut off the power supply and be sure to insert the grinding head into the bottom of the collet. If the grinding head is not inserted into the bottom of the collet, it is easy to fall off due to vibration, which will bring risks.
 - A standard polishing head should be used, and bent, deformed or broken polishing heads should not be used;
 - When the handle is not in use, the polishing head should be kept clamped.
 - If abnormal vibration and sound are found, please stop using and do not touch any rotating parts;
 - For safety, please avoid use by children.

Warranty regulations

The warranty service is limited to the valid warranty period under normal use. Due to the product quality problems caused by non-human damage, the bill and this warranty card will enjoy the following three guarantees according to the national Three Guarantees Services:

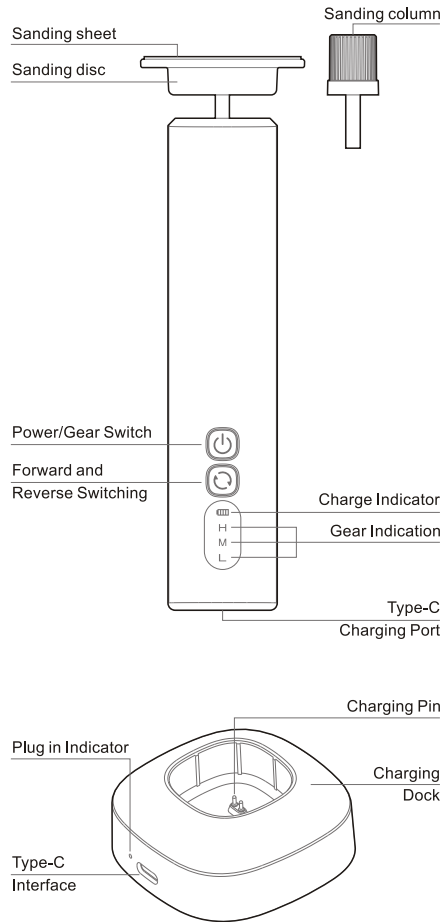
- In case of failure within 7 days from the date of purchase, responsible for free return and replacement-Goods or repairs.
- In case of failure within 7 to 15 days from the date of purchase, responsible for free replacement or repair it.
- In case of failure within one year from the date of purchase, free of charge within the validity period Maintenance service.
- Please bring this certificate and valid purchase bill when repairing. This certificate cannot be altered. Otherwise, it will be regarded as invalid certificate, which can be valid only after being sealed by the selling unit.

Non-warranty regulations

The following cases are not within the scope of San Bao service:

- The contents on the warranty card are inconsistent with or altered with the physical identification of the goods
- Unauthorized maintenance, private dismantling, misuse, collision, liquid injection and modification. The product quality problem caused by improper use or tear up. The label, anti-counterfeiting mark and machine serial number of altered and altered products etc.
- It is not used and maintained according to the requirements of the product manual's damaged.
- Damage of products and accessories due to human activities.
- Damage caused by force majeure such as flood, fire, lightning strike, etc
- Failure or accident caused by using non original accessories of the company
- There is no warranty card and valid bills, and the goods cannot be proved to be in the Three guarantees are valid.
- The nail polisher is an electronic product and cannot be washed or washed. If the product fails, it is not included in the three-pack maintenance service.

Product Structure



Product Features

- 1.The exterior design is elegant and generous, and it is easy to carry when going out.
- 2.Replaceable universal sanding heads to meet different needs for foot grinding and polishing.
- 3.Forward and reverse rotation, 6 - speed adjustment with high torque and high copper core; LCD icon indication.
- 4.High rotation speed and strong power.
- 5.Dual - mode charging via the base or direct plug - in with a Type - C port.
- 6.Equipped with a high - performance lithium - ion battery and a USB charging indicator.
- 7.Battery level query function.

Product Use

- 1.Sanding sheet or sanding ring replacement operation:
Stick on the sanding sheet or put on the sanding ring.
- 2.Startup operation:
Press and hold the "⏻" power button for 2 seconds to directly enter the third - gear rotation speed for forward grinding, and the "L" icon stays on.
- 3.Gear shifting:
Short - press the "⏻" power button to switch between 1 - 6 rotation speeds, corresponding to the "L - M - H" icons staying on.
- 4.Forward and reverse rotation operation:
Short - press the "↺" forward and reverse button to switch between forward and reverse rotation. The corresponding gear icon staying on indicates forward rotation, and the icon flashing indicates reverse rotation.
- 5.Shutdown operation:
In the working state, press and hold the "⏻" power button for 2 seconds to turn off the device.
- 6.Battery level query:
In the off state, short - press the "⏻" power button to display the "🔋" icon. The icon staying on for 2 seconds indicates the battery level status. If the "LMH" icons are on, it means the battery level is more than 70%; if the "LM" icons are on, it means the battery level is more than 40%; if only the "L" icon is on, it means the battery level is 40% or less.
- 7.Charging indication: Plug in the USB cable. The "🔋" icon flashing indicates that it is charging, and the "🔋" icon staying on indicates that it is fully charged.
- 8.Automatic shutdown:
The device will automatically turn off after 20 minutes of grinding.

Product Parameters

Product Name	Electric Foot Callus Remover	Product Model	C1
Charging Voltage	DC5V	Working Voltage	DC3.7V
Output Power	2W	Charging Time	3H
Battery Capacity	1200mAh	Main Body Size	150*30*30mm
Net Weight	155g	Base Size	60*60*24mm

Precautions

1. Please use a DC5V adapter for charging.
2. Do not use alcohol, cleaning agents, or substances containing mercury, alkalis, acids, etc, for cleaning.
3. The product is not waterproof. Do not wash it with water.
4. This product is not a children's toy. Please keep it away from children.

Warranty Card

Thank you for choosing our company's product. To safeguard your rights and interests, please keep the after - sales service card properly.

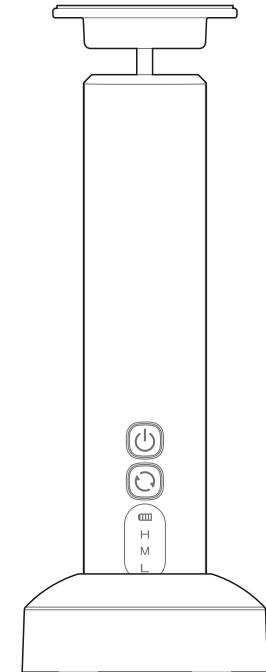
Name: _____ Telephone: _____
 Product Name: _____ Product Model: _____
 Purchasing Date: _____
 Address: _____

- Damage caused by improper use, errors, or human - induced factors is not covered by the warranty.
- Loss or damage of the after - sales service card is not covered by the warranty.
- Damage caused by natural disasters or force majeure is not covered by the warranty.
- Other consumable accessories are not covered by the warranty.
- The main unit is under warranty for one year from the date of purchase for normal use.



Electric Foot Callus Remover

Operation Instructions



Product Parameters

Product Name	Electric Foot Grinder	Product Model	C2
Charging Voltage	DC5V	Working Voltage	DC3.7V
Output Power	2W	Charging Time	3H
Battery Capacity	1200mAh	Main Body Size	149*89*42mm
Net Weight	185g	Base Size	60*60*24mm

Electric Foot Grinder

Operation Instructions

Precautions

1. Please use a DC5V adapter for charging.
2. Do not use alcohol, cleaning agents, or substances containing mercury, alkalis, acids, etc. for cleaning.
3. The product is not waterproof. Do not wash it with water.
4. This product is not a children's toy. Please keep it away from children.

Warranty Card

Thank you for choosing our company's product. To safeguard your rights and interests, please keep the after-sales service card properly.

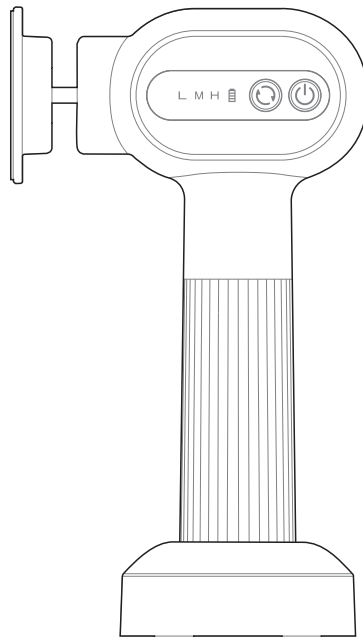
Name: _____ Telephone: _____

Product Name: _____ Product Model: _____

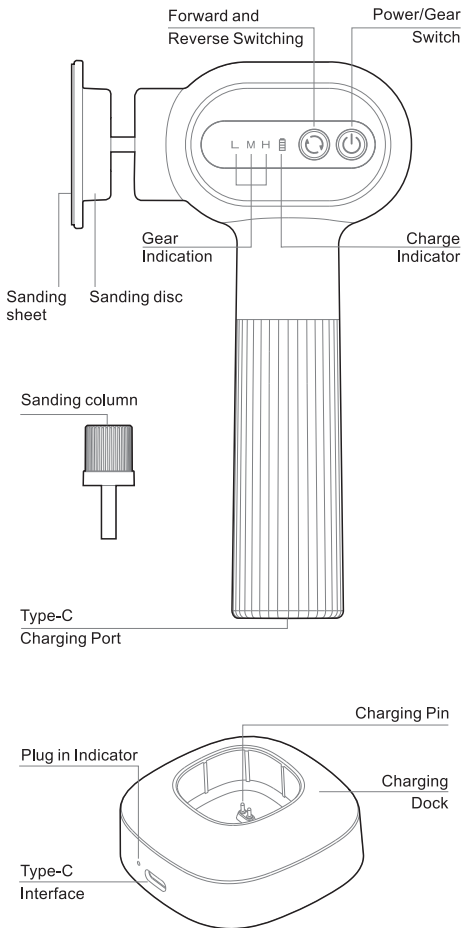
Purchasing Date: _____

Address: _____

- Damage caused by improper use, errors, or human-induced factors is not covered by the warranty.
- Loss or damage of the after-sales service card is not covered by the warranty.
- Damage caused by natural disasters or force majeure is not covered by the warranty.
- Other consumable accessories are not covered by the warranty.
- The main unit is under warranty for one year from the date of purchase for normal use.



Product Structure



Product Features

- 1.The exterior design is elegant and generous, and it is easy to carry when going out.
- 2.Replaceable universal sanding heads to meet different needs for foot grinding and polishing.
- 3.Forward and reverse rotation, 6 - speed adjustment with high torque and high copper core; LCD icon indication.
- 4.High rotation speed and strong power.
- 5.Dual - mode charging via the base or direct plug - in with a Type - C port.
- 6.Equipped with a high - performance lithium - ion battery and USB charging indicator.
- 7.Battery level query function.

Product Use

- 1.Sanding sheet or sanding ring replacement operation:
Stick on the sanding sheet or put on the sanding ring.
- 2.Startup operation:
Press and hold the "⏻" power button for 2 seconds to directly enter the third - gear rotation speed for forward grinding, and the " L " icon stays on.
- 3.Gear shifting:
Short - press the "⏻" power button to switch between 1 - 6 rotation speeds, corresponding to the " L - M - H " icons staying on.
- 4.Forward and reverse rotation operation:
Short - press the "↺" forward and reverse button to switch between forward and reverse rotation. The corresponding gear icon staying on indicates forward rotation, and the icon flashing indicates reverse rotation.
- 5.Shutdown operation:
In the working state, press and hold the "⏻" power button for 2 seconds to turn off the device.
- 6.Battery level query:
In the off state, short - press the "⏻" power button to display the "🔋" icon. The icon staying on for 2 seconds indicates the battery level status. If the " L M H " icons are on, it means the battery level is more than 70%; if the " L M " icons are on, it means the battery level is more than 40%; if only the " L " icon is on, it means the battery level is 40% or less.
- 7.Charging indication: Plug in the USB cable. The "🔋" icon flashing indicates that it is charging, and the "🔋" icon staying on indicates that it is fully charged.
- 8.Automatic shutdown:
The device will automatically turn off after 20 minutes of grinding.